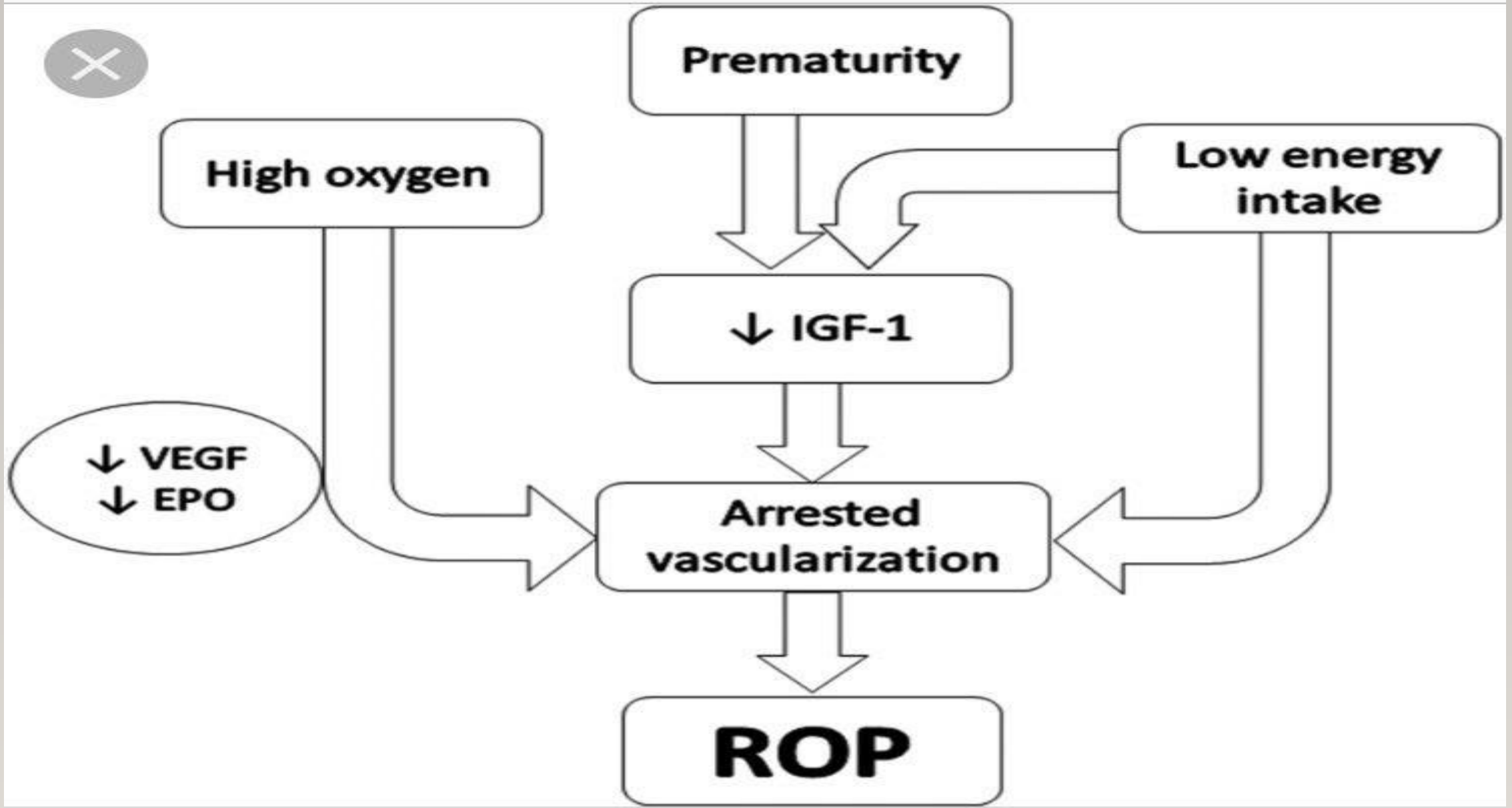
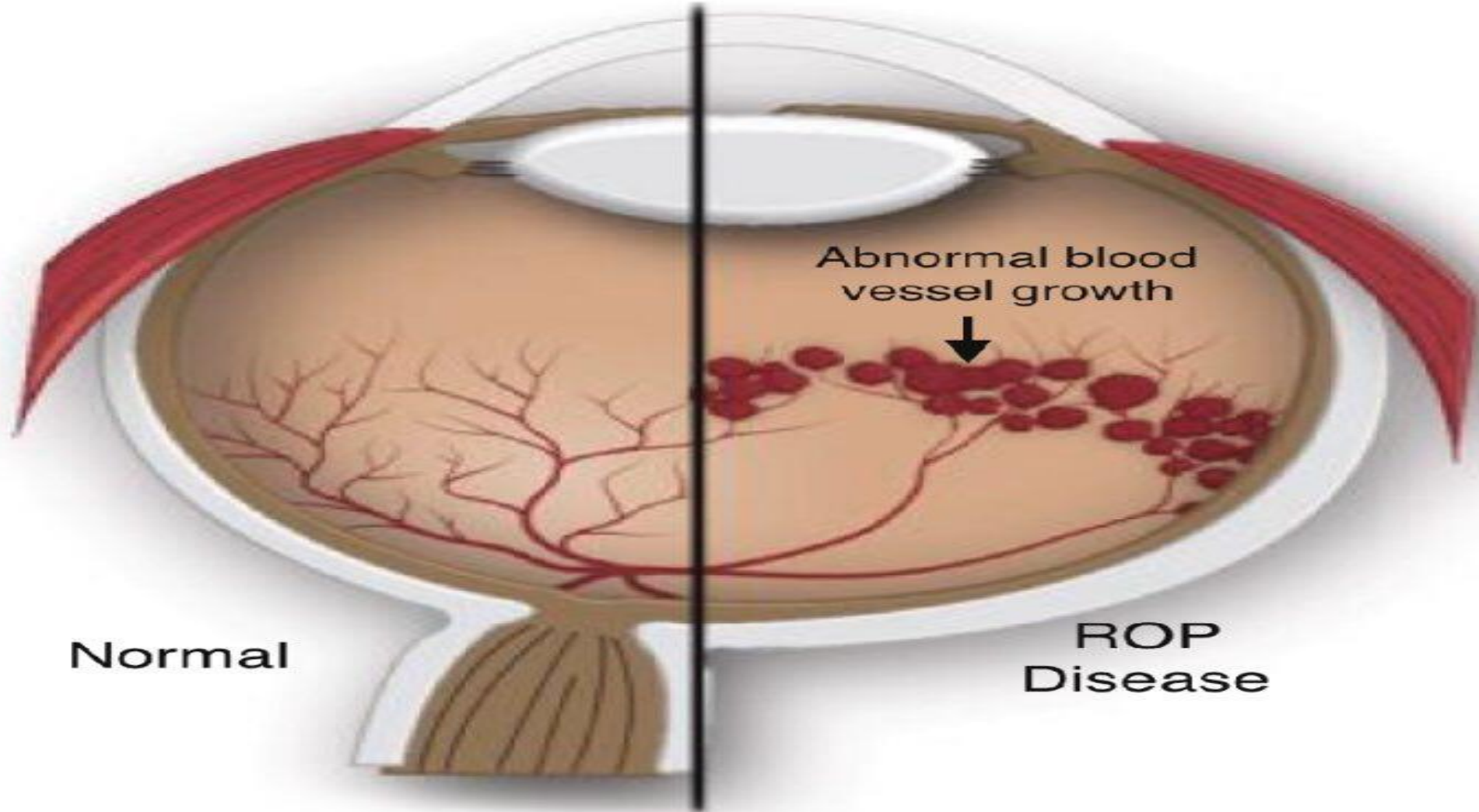


به نام خدا





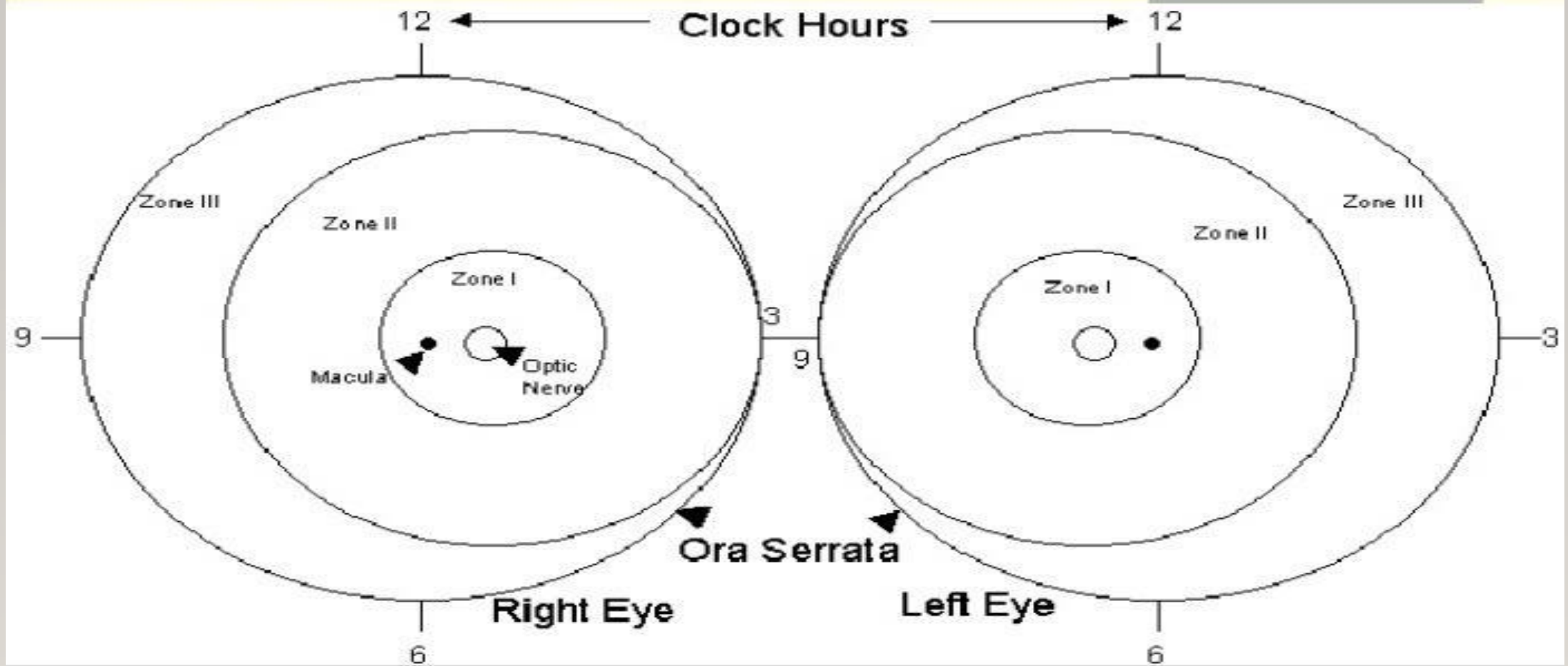
Retinopathy of Prematurity - ROP



Normal

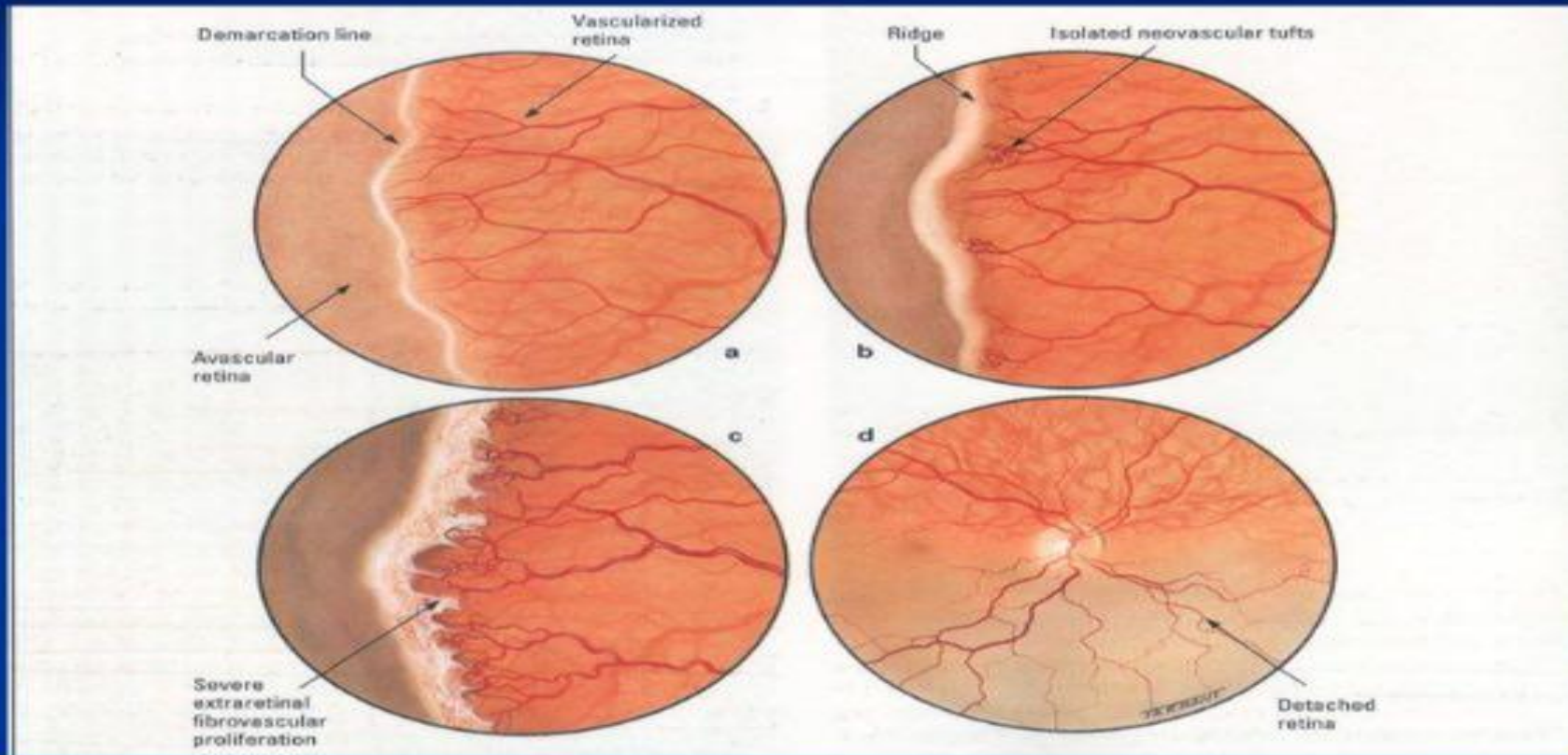
ROP
Disease

Classification System

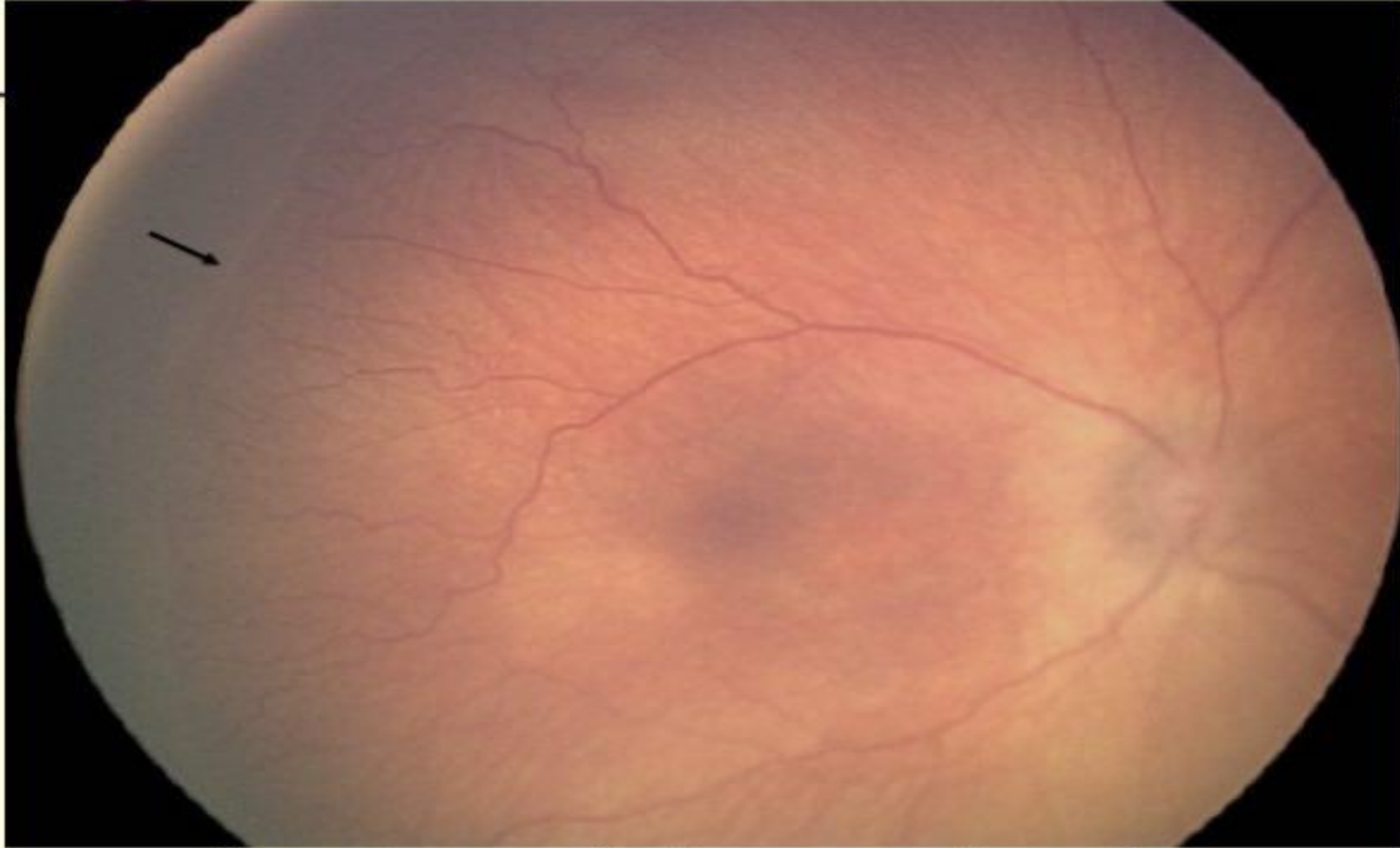




STAGES OF ROP



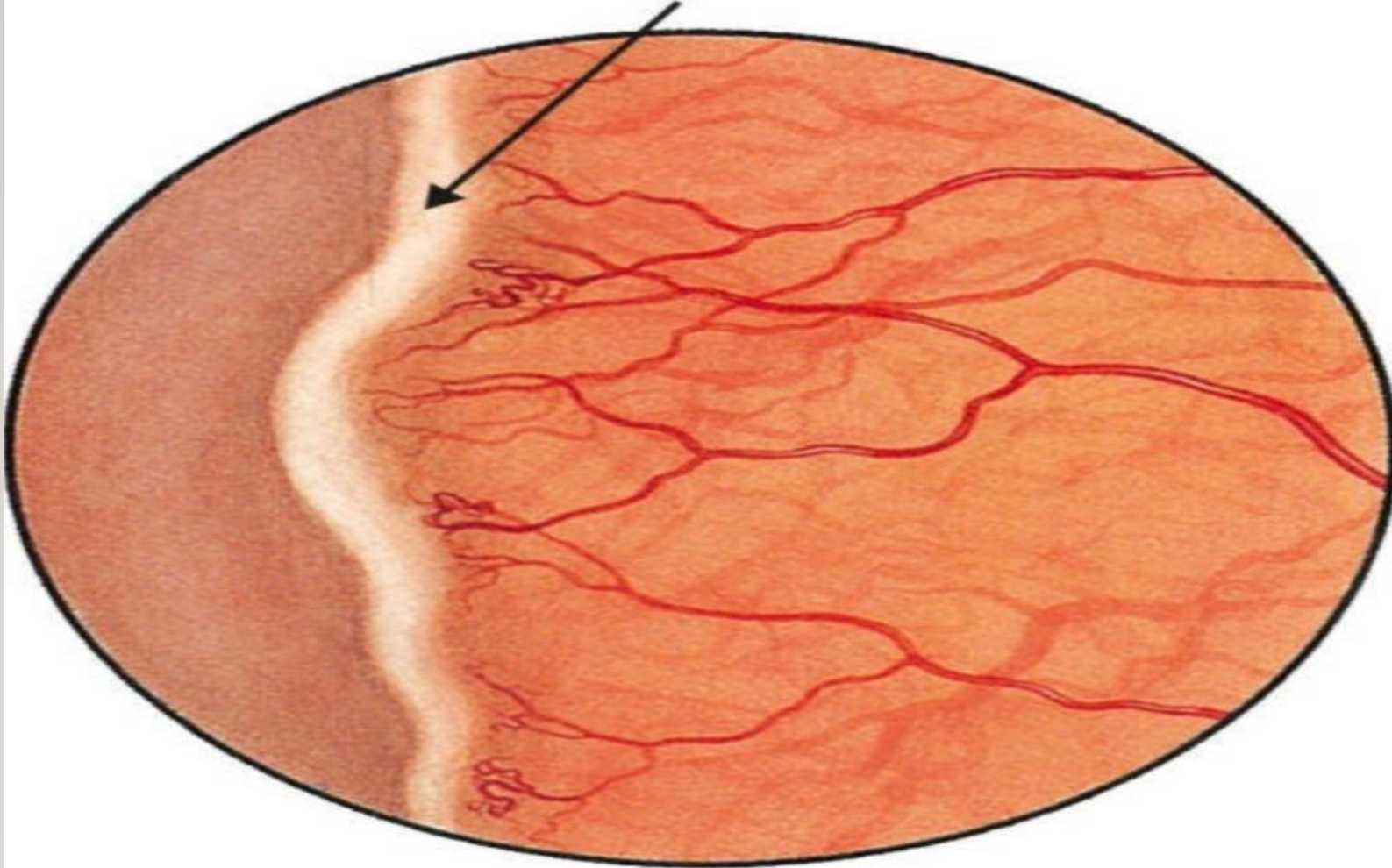
× Stage 1: Demarcation Line



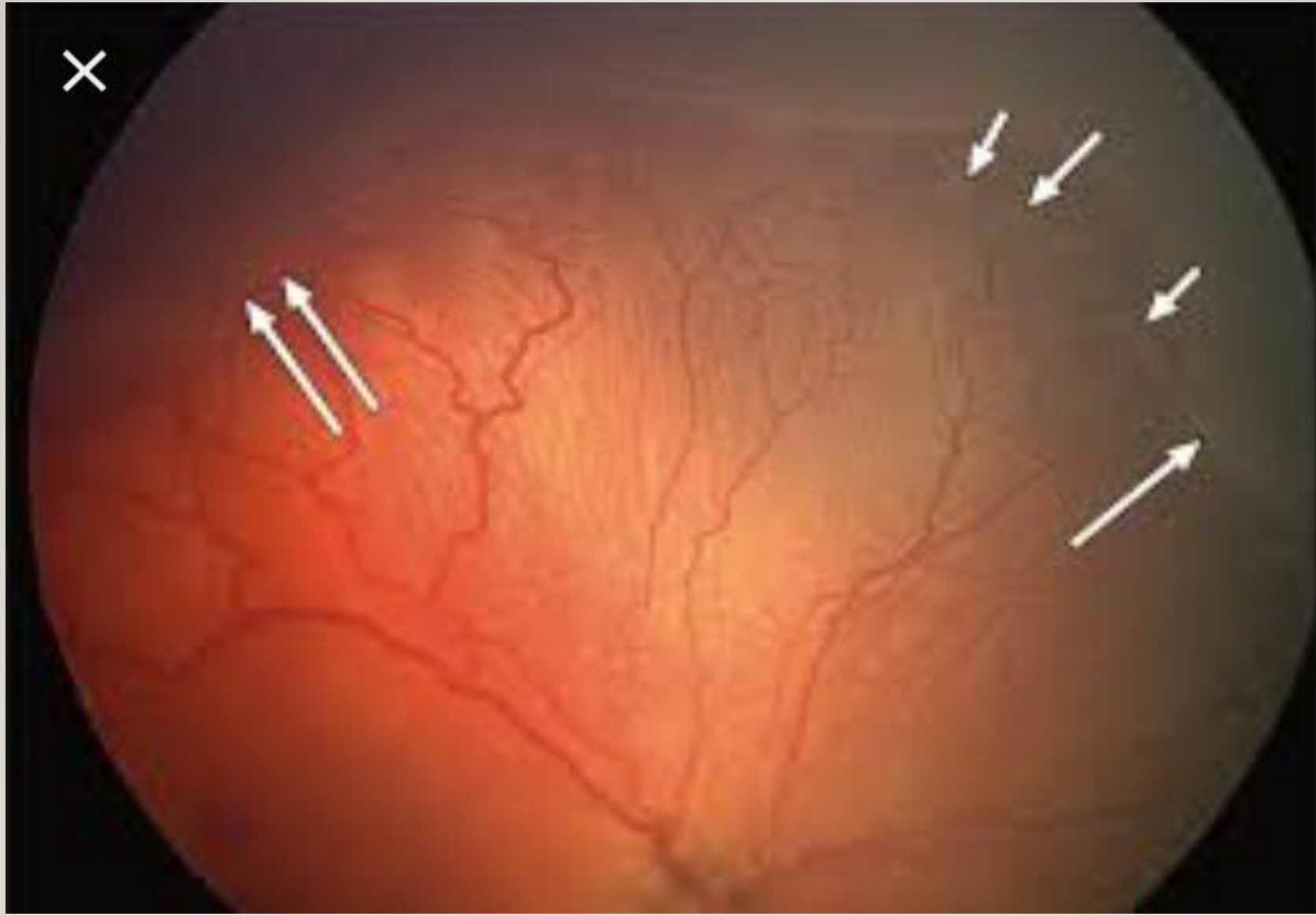
Separates vascular from avascular retina

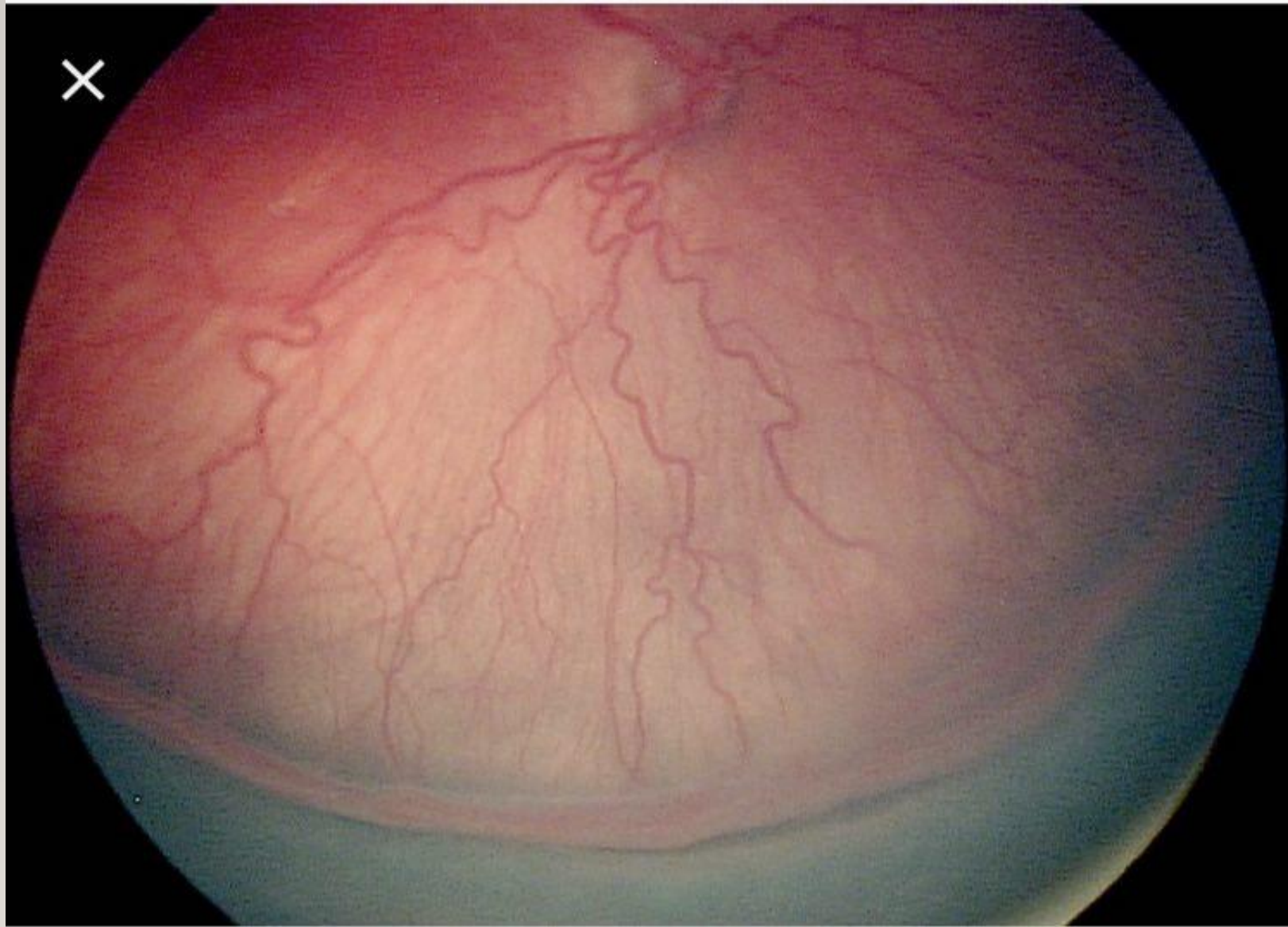


Elevated ridge
(mesenchymal shunt joining
arterioles with veins)

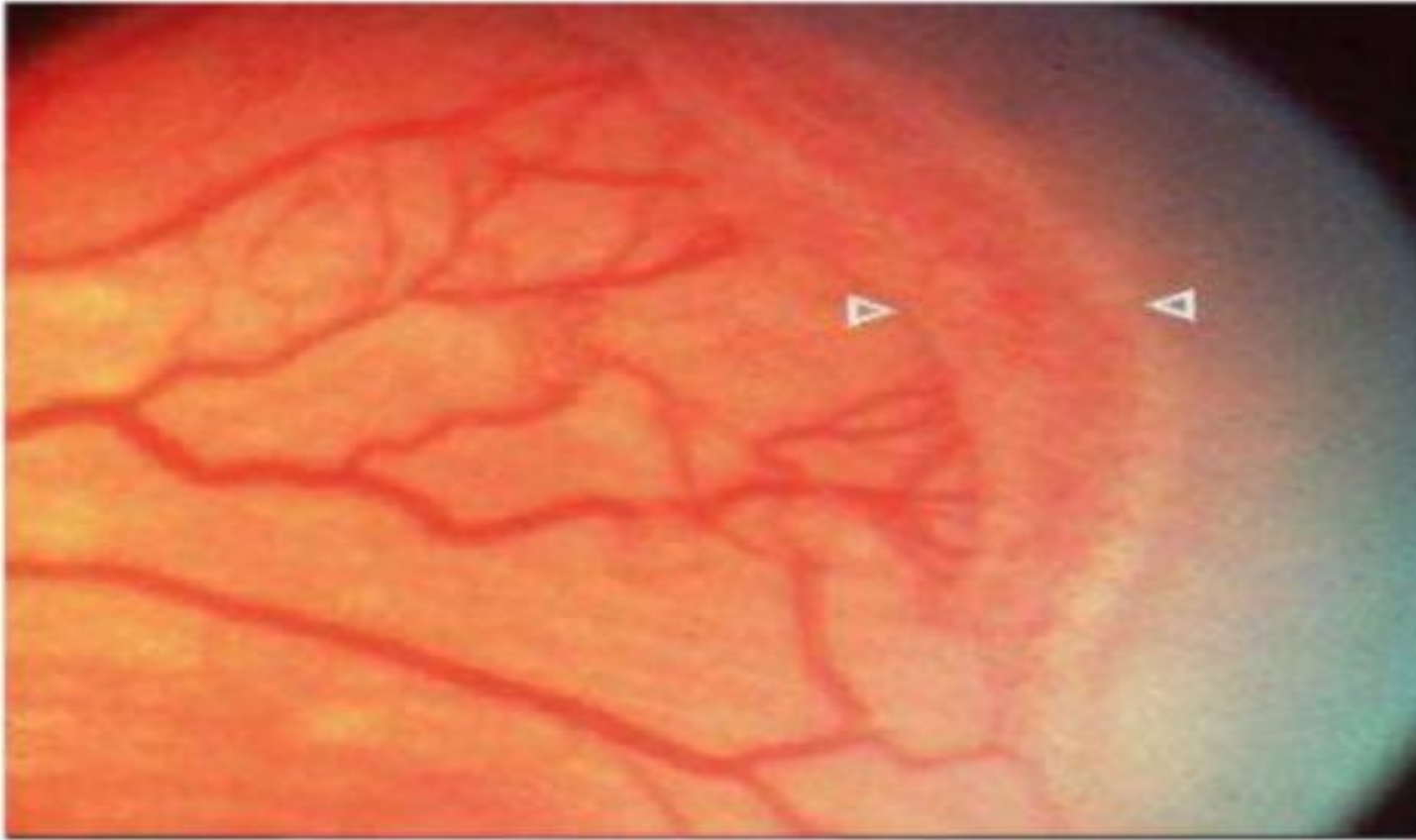


Stage - II





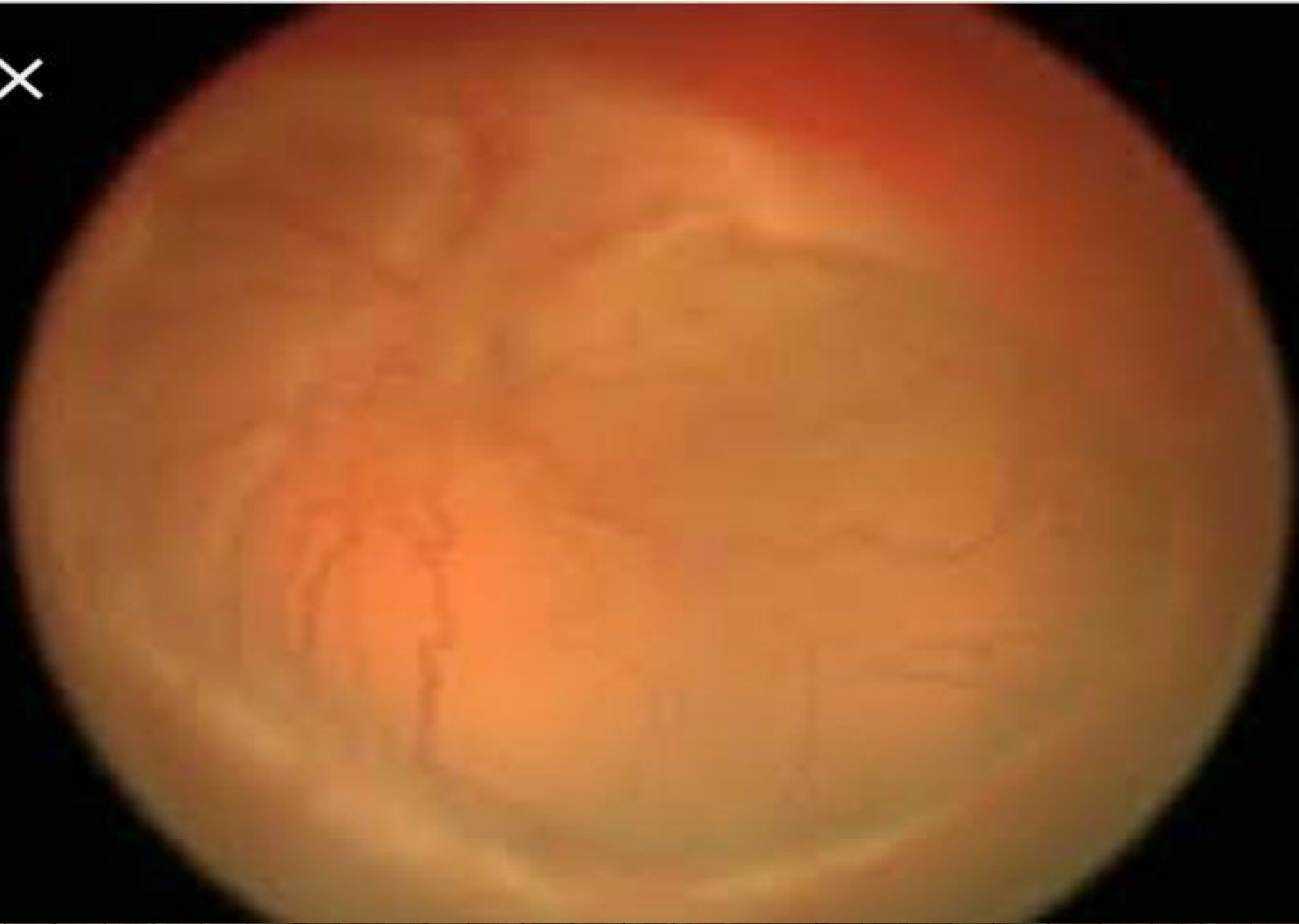
Stage 3



Stage 3 retinopathy of prematurity In stage 3 ROP, new blood vessels and fibrous tissue grow along the ridge and extend into the vitreous.



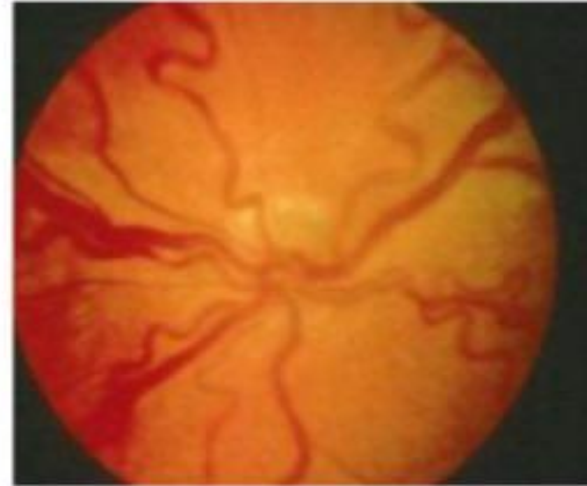
X

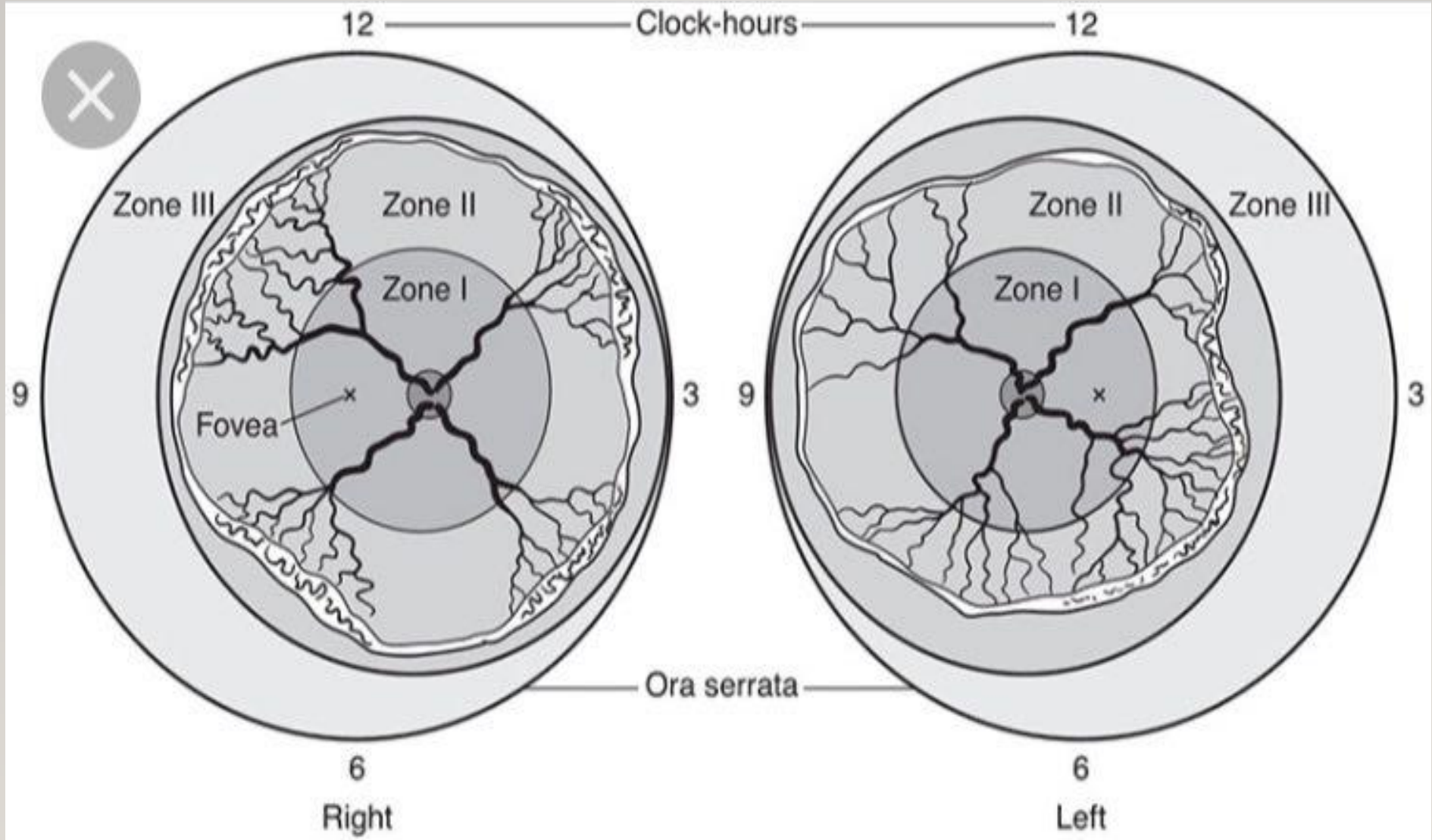




PLUS

- *posterior venous dilation and arteriolar tortuosity of at least 2 quadrants*
- Arises gradually or very rapidly.
- *Due to AV shunting mainly in ridge tissue*
- *Severity indicator*





✕ PRETHRESHOLD ROP :

TYPE 1
includes:

- Zone 1 - Any ROP with plus ds or stage 3 with or without plus ds
- Zone 2 - stage 2 or 3 ROP with plus ds

TYPE 2
includes:

- Zone 1 - stage 1 or 2 without plus ds
- Zone 2 - stage 3 without plus ds.

Aggressive posterior ROP:

Uncommon,

rapidly progressive,

severe form of ROP,

characterized by its posterior location (usually zone 1) and prominence of plus disease.

Also termed as *RUSH disease*.



Table 2. Screening Frequency for Patients at Risk for ROP

Timing of Follow-up	Disease
1 week	Zone 1: stage 1 or 2 ROP Zone 2: stage 3 ROP
1-2 weeks	Zone 1: immature Zone 2: stage 2 ROP Zone 1: regressing ROP
2 weeks	Zone 2: stage 1 ROP Zone 2: regressing ROP
2-3 weeks	Zone 2: immature Zone 3: stage 1 or 2 ROP Zone 3: regressing ROP

Screening of at risk babies

Diagnosis

Treatment

- Cryotherapy (mostly outdated)
 - Laser treatment (gold standard)
 - Anti-VEGF (adjuvant) before laser and surgery
 - Surgery
- Rx of ROP related complications

Post treatment follow up

Rehabilitation



TREATMENT

- RETINAL ABLATION
 - CRYO
 - LASER
- SCLERAL BUCKLING
- VITRECTOMY
 - LENS SPARING
 - With LENSECTOMY

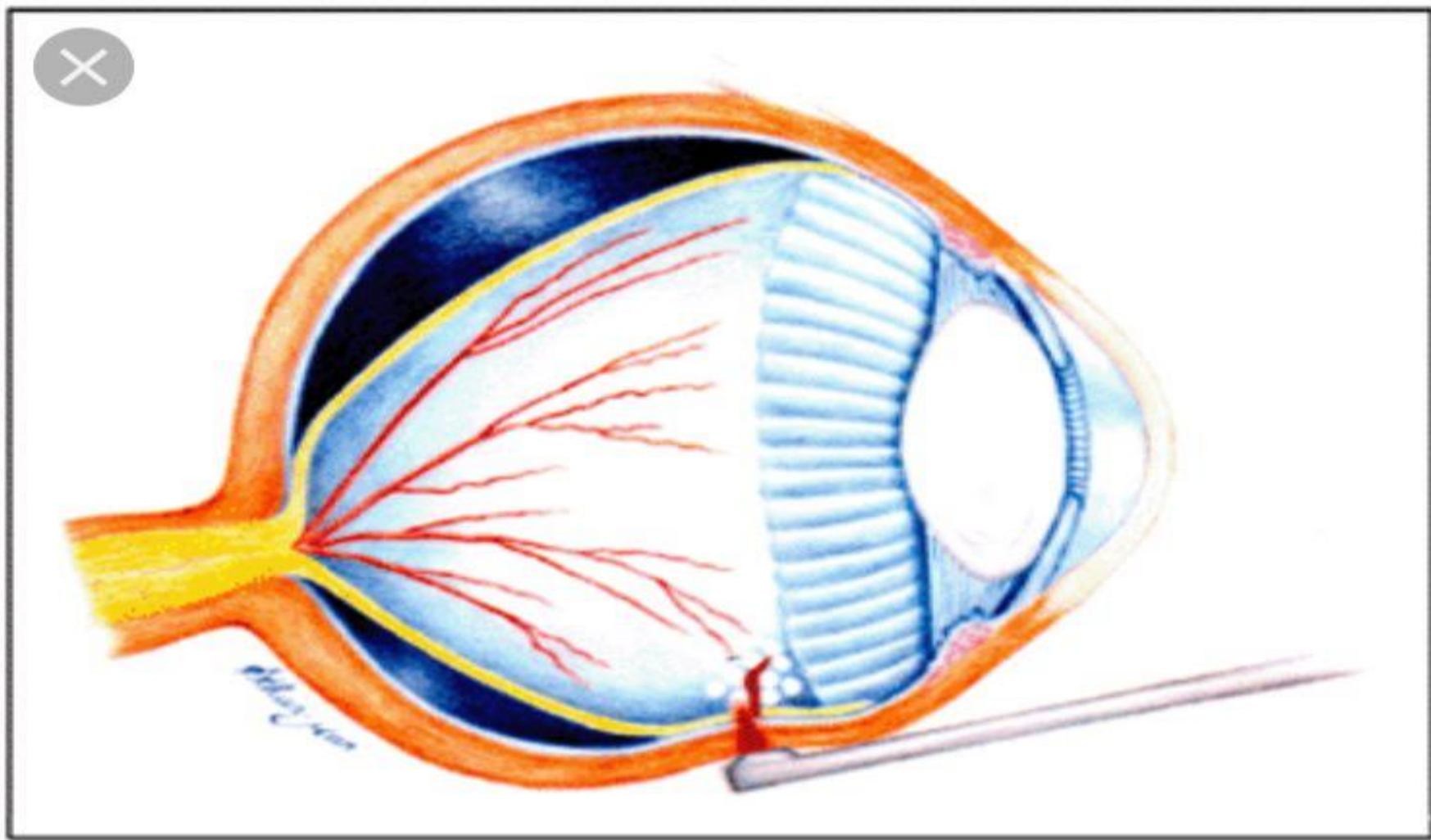
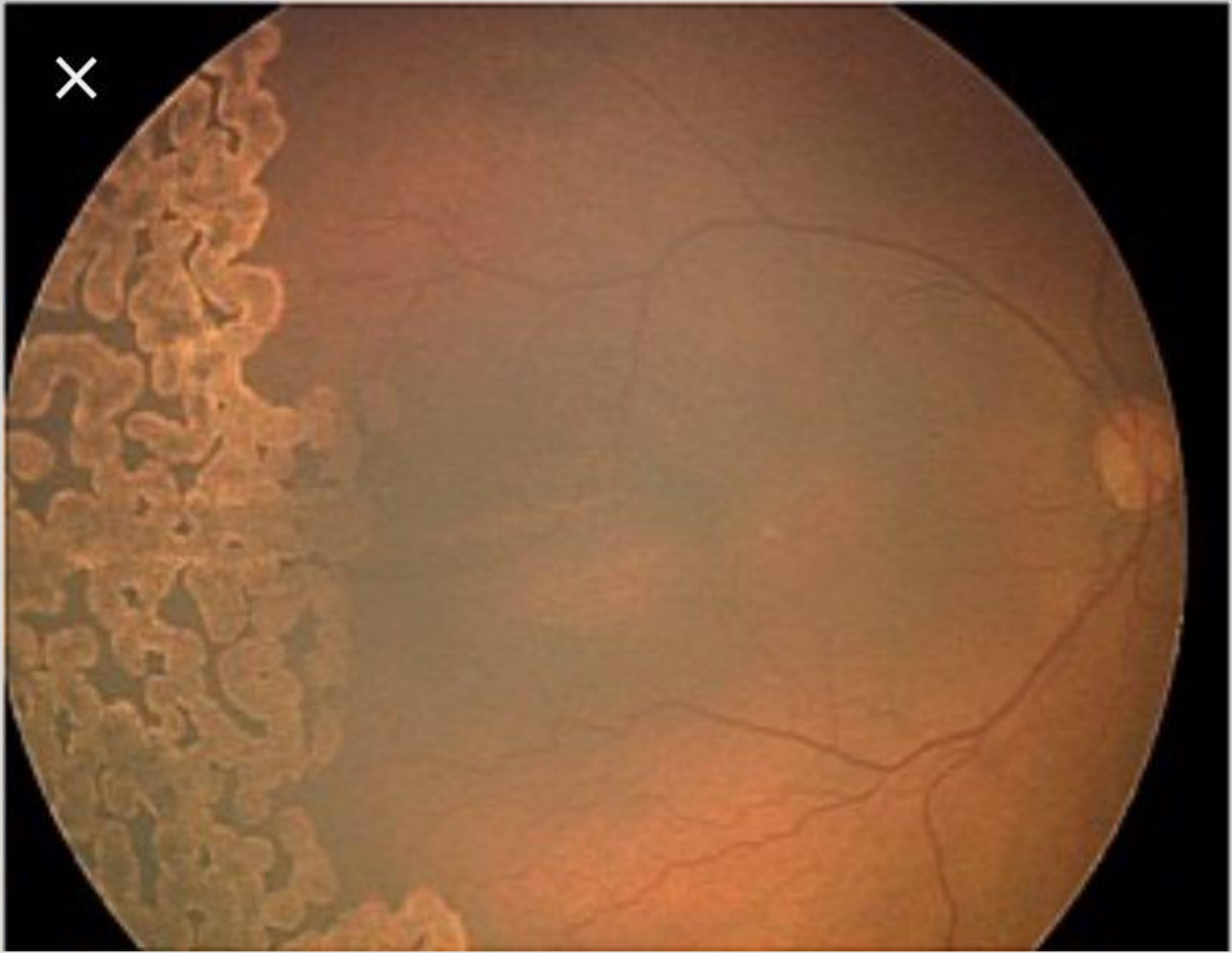
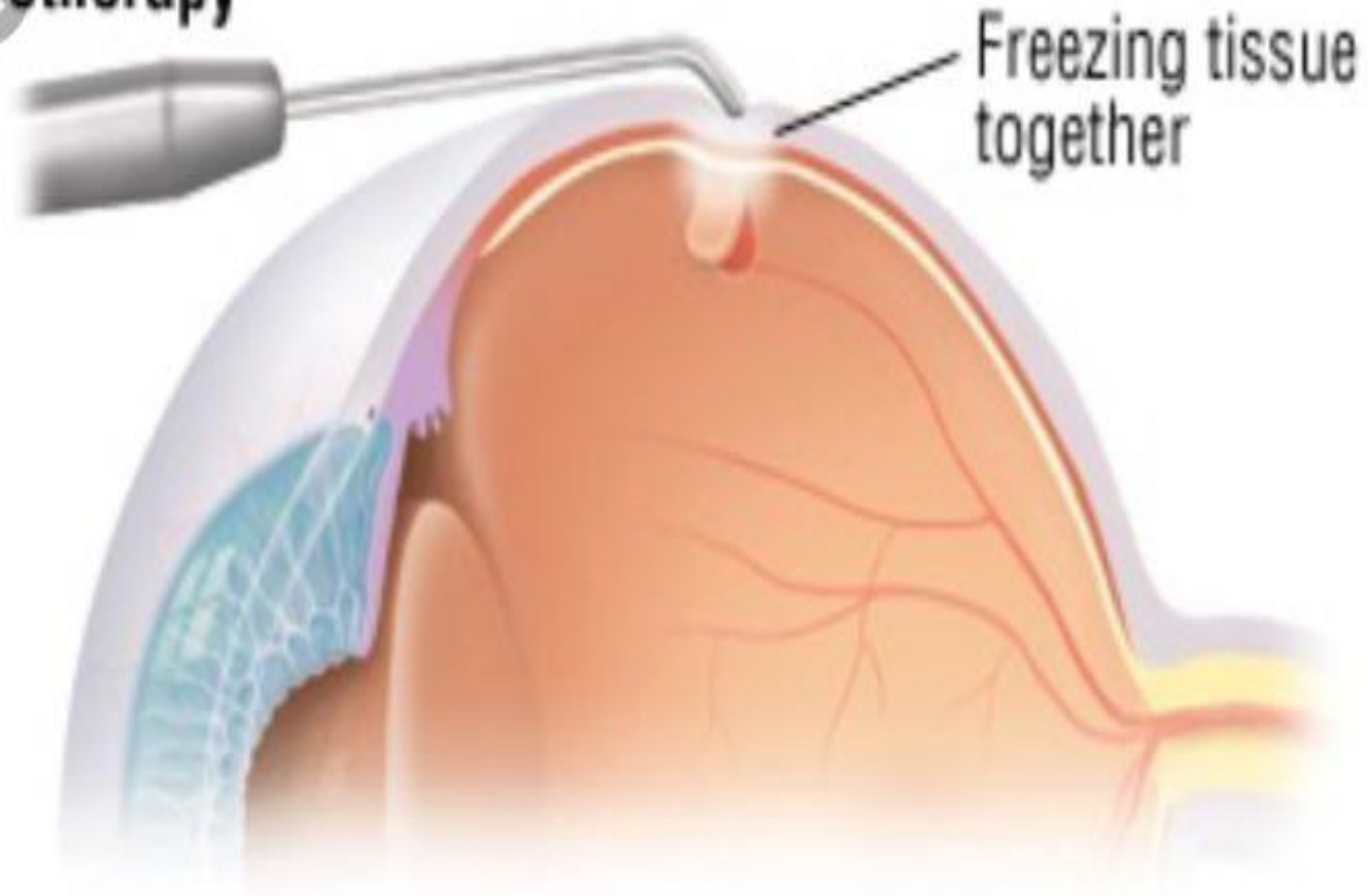


Figure 2 - Schematic drawing showing the moment of application of transscleral diode laser



Cryotherapy



Thank you for your attention!